

### Air blow nozzles Energy saver BNE Series

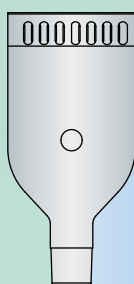


#### Metal flat type renewed to be compact and lightweight!

*New*



- Energy-saving Air Blow Nozzle **Reduces** flow consumption **by approx. 45%**
- Available in two jet types (flat and round) and two materials (**resin/metal**) available.
- **Silent design** for a quiet work environment.

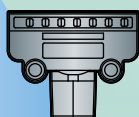


Conventional model

While maintaining performance,

**73%** reduction in weight

**61%** reduction in overall length



BNE-8S10FS

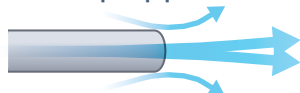
Can be mounted even in tight spaces.



#### Energy saving

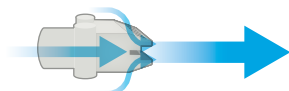
Reduces consumption flow rate by about 45% to contribute to carbon neutrality

With an open pipe



With an energy-saving-type (flat-type)

The nozzle pulls in surrounding air from both the inside and the outside to create a more powerful, amplified airflow.



#### Uniformity

Adopts a special structure that enables uniform force along the width of the injection



Flat Type

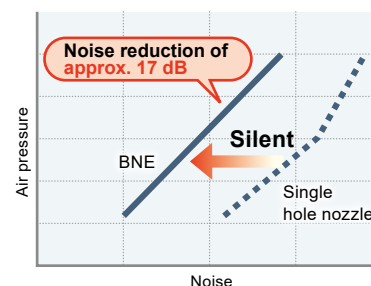


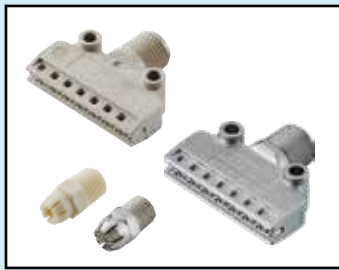
Round-type



#### Low noise

A work environment-friendly silent design





Air Blow Nozzle (Energy-saving Type)

# BNE Series


●Connection Port Size: R1/4

RoHS

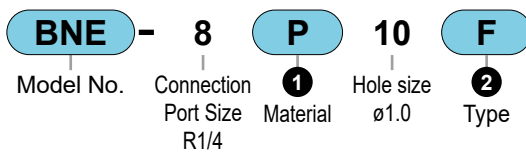
- An energy-saving air nozzle that amplifies airflow by drawing in ambient air.
- A flat type for a uniform blow across a wide area, and a round type for a targeted, pinpoint blow are available. The evenly distributed air jet provides high blow efficiency and reduces air consumption.
- Both resin and metal types are available, allowing selection based on the application and environment.
- Low-noise design for a quiet work environment.

## Air Patterns

●Flat Type 

●Round-type 

## Model No. Notation Method



### 1 Material

Code	Content
<b>P</b>	Resin
<b>S</b>	Metal

### 2 Type

Code	Content
<b>F</b>	Flat type (P resin)
<b>FS</b>	Flat type (S For metal)
<b>R</b>	Round-type

## Specifications

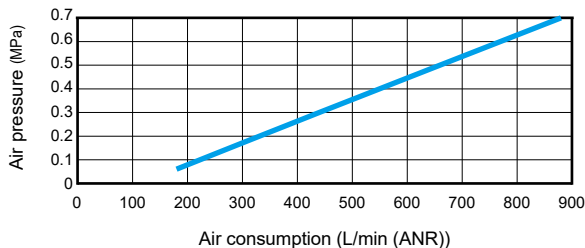
Item		BNE-8P10F	BNE-8S10FS	BNE-8P10R	BNE-8S10R
Maximum Operating Pressure	MPa	0.7	1.0	0.7	1.0
Heat resistance temperature	°C	120	400	60	400
Connection Port Size	R	1/4			
Weight	g	9	38	2	12
Hole diameter	mm	1.0			
Number of holes	Individual	16	16	8	8
Air consumption *1	L/min (ANR)	440		245	

\*1: Air consumption is the reference value of atmospheric pressure conversion when the standard pressure is 0.3 MPa.

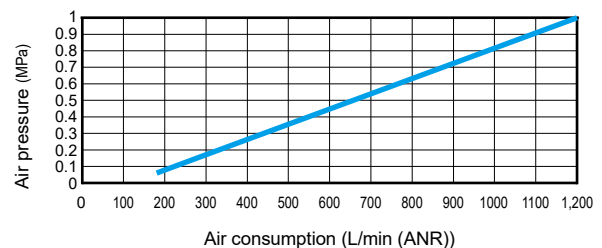
Air consumption characteristics \*The air consumption characteristics graph gives reference values but does not guarantee the values.

### Flat Type

#### ●BNE-8P10F

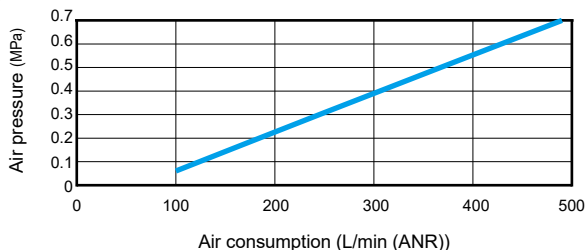


#### ●BNE-8S10FS

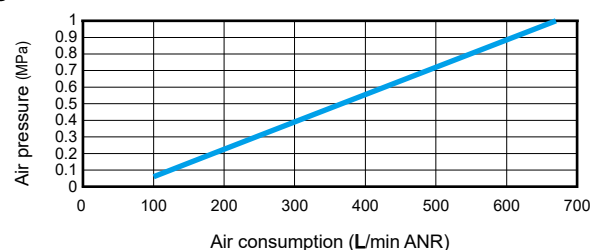


### Round-type

#### ●BNE-8P10R



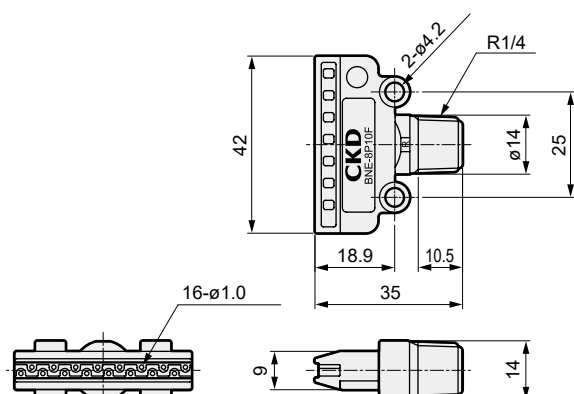
#### ●BNE-8S10R



### External Dimension Drawings

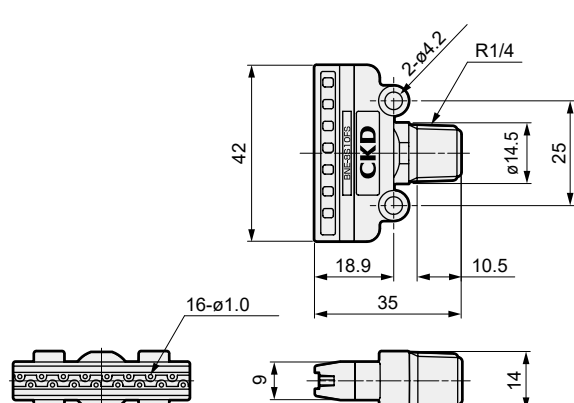
#### Flat Type

●BNE-8P10F



Material: PPS

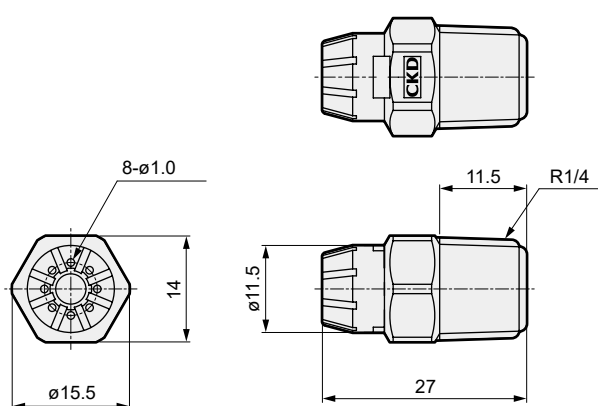
●BNE-8S10FS



Material: Stainless steel 316L

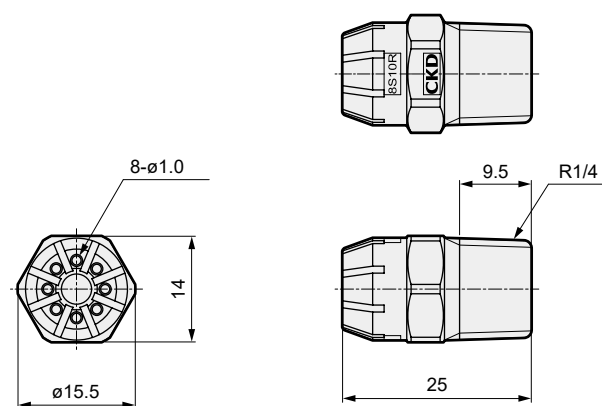
#### Round-type

●BNE-8P10R



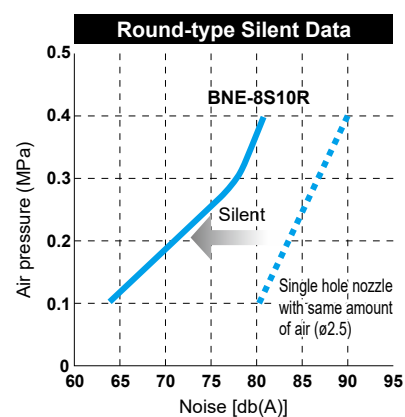
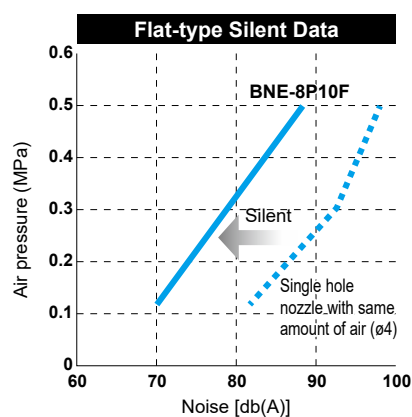
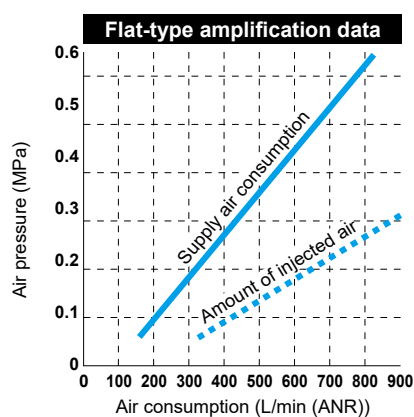
Material: PP

●BNE-8S10R



Material: Stainless steel 316L

### (Reference) Amplification effect characteristic (Reference) Silent effect characteristic



●Measurement position: 1 m ahead of nozzle (1 m high)

●Background noise value; 58 dB (A)

**⚠ Read the "Safety precautions" and "Instruction Manual" on the CKD Components Product Site (<https://www.ckd.co.jp/en/>) before use.**



## Related Products

### Pulsed blow valve BNP Series

- Reduces compressed air by 75% compared to continuous blow  
\*A reference value under our test conditions.
- Available in two types: unit type and gun type  
Can be used selectively according to the application.
- Easy adjustment  
Frequency can be adjusted with one turn of the adjustment knob.
- Thin design allows for installation even in narrow spaces  
A mounting plate is also available as an option (BNP-U).
- No electrical wiring required



Catalog No. CC-1640AA



### Compact air blow valve EXA Series

- Achieves large flow rate and low power consumption  
By adopting a pilot system that uses a low power consumption (0.6 W) 3-port valve for the actuator, both high flow and low power consumption have been achieved. (Direct PC drive possible)
- Compact and Lightweight  
Weight has been reduced by optimizing materials. Furthermore, the volume has been reduced by up to 30% and the weight by approximately 70% compared to previous CKD models.
- Easy Piping Connection  
The adoption of a body with one-touch fittings contributes to a reduction in man-hours. Threaded fittings are also supported.
- Oil-free Specifications (option)  
Ideal for environments where oil is prohibited.
- Manifold Type  
Achieves diverse piping layouts and contributes to space saving.



### Needle valve with adjusting dial DVL Series

- Linear flow characteristics
- Numerical control of flow rate is possible visually
- Use as a speed controller
- Oil prohibited available
- Unrestricted mounting



For details, refer to CKD components product site (<https://www.ckd.co.jp/kiki/jp/en/>) → "Model No."

If the goods and/or their replicas, the technology and/or software found in this catalog are to be exported from Japan, Japanese laws require the exporter makes sure that they will never be used for the development and/or manufacture of weapons for mass destruction.

# CKD Corporation

[Website]  
<https://www.ckd.co.jp/en/>

Head Office • Plant  
Tokyo Office  
  
Osaka Office

2-250, Oujii, Komaki, Aichi 485-8551  
4F, Bunkahousou Media Plus, 1-31-1, Hamamatsu-cho,  
Minato-ku, Tokyo 105-0013  
6F, PMO EX Shin-Osaka, 4-2-10 Miyahara,  
Yodogawa-ku, Osaka 532-0003

TEL(0568)77-1111 FAX(0568)77-1123  
TEL(03)5402-3620 FAX(03)5402-0120  
TEL(06)6396-9630 FAX(06)6396-9631